



**OILMIN**

# **Group Capability Statement**

YOUR VISION OILMIN EXPERTISE



# COMPANY PROFILE

OM Holdings Limited, trading as Oilmin Field Services and Oilmin Seismic Services, is a registered company (1-63993) in Papua New Guinea, where it has been operating since 1992. Oilmin's core expertise lies in providing skilled and unskilled manpower and expert supervision for onshore seismic acquisition surveys, construction of remote camps, management and catering services, civil construction projects (including rig pad construction), and remote logistics services.

Oilmin has a team of specialists, including Project Managers with specific expertise in Seismic Crew Management, Tree Felling Specialists, Trainers, Drilling Managers, Bridging Managers, Civil Construction Managers, Camp Managers, and Catering Managers. The main responsibility of these specialists is to bring their international experience and expertise to ensure safe operations. Oilmin requires them to assess the national workforce, train them, identify high-achievers, and mentor them for senior roles within the company.

This approach has been highly successful, with Oilmin now having National Chainsaw Supervisors and National Managers in areas such as Camp Management, Catering, Personnel, Human Resources, and Logistics. This has not only helped to enhance the skills and knowledge of the national workforce but has also empowered them to take on leadership roles within the company.



# FACILITIES AND SUPPORT BASES

Oilmin has various sites and facilities located throughout Papua New Guinea that can be conveniently accessed for project requirements. These facilities are strategically positioned in the Highlands, Gulf Province, and Western Province for personnel recruitment and mobilisation purposes.

The company boasts of a distinctive integrated supply chain, procurement, and expediting systems, providing greater control over the purchasing and supply process compared to other companies in the region. With our efficient organization and assets, we can effectively meet the challenges of providing a comprehensive range of services to cater to your specific needs.



## REMOTE FIELD SERVICES

Oilmin has been providing support services across Papua New Guinea since 1992, specializing in remote areas. Our services cover a range of areas including:

- Environmental Impact Studies
- Biodiversity Studies
- Community Affair Awareness Programs
- Civil Construction
- Seismic Surveys
- Community Development Programs

We are committed to delivering high-quality services to our clients, even in the most challenging and remote locations. Our experienced team has a proven track record in delivering services that meet or exceed our clients' expectations. We understand the importance of environmental stewardship and strive to minimize the impact of our operations on the local environment.



We also recognise the importance of building positive relationships with local communities. Our community affairs awareness programs and community development initiatives are designed to engage and educate local communities and build long-lasting relationships based on mutual respect and understanding.

OILMIN has a successful track record of providing and contributing to various areas in other projects throughout PNG, including local labor recruitment, fresh produce supply and capacity building, local timber supply, sports sponsorship projects, and community awareness campaigns.

Additionally, OILMIN has supported key donors such as Books4Kids PNG and Project Yumi. With our experience and expertise in these areas, OILMIN is well-positioned to manage certain aspects of community affairs and community development throughout projects.



# SEISMIC OPERATIONS

Oilmin has provided expert personnel for seismic acquisition since 1992 and since then we have worked on 100+ surveys. In recent years, the global seismic industry has suffered enormously from low activity and low pricing and this has seen some of the major players such as Western Geco and CGG ceasing both marine and land acquisition. The consequence of this is that exploration companies operating in PNG now rely on smaller boutique seismic acquisition companies to provide the recording equipment. They in turn, rely on Oilmin's expertise to Project Manage the entire seismic acquisition programs including the sub-contracting of helicopter and fixed wing aviation support, medical services, provision of fuel and fuel handling systems, chartering of barges and provision of security. Oilmin directly provides the logistics, base camps, fly camps, line clearing and bridging, survey crews, drilling and pre-loading crews and recording crews.

Dependent on the size of the project, OILMIN may be tasked with fielding 200 – 1,500 people together with the necessary expertise (Project Manager, Party Chief, HSE Managers, Bridging Managers, Tree Felling Specialists and Drilling Managers).



## BRIDGING - LINE PREPARATION

Over 30 years of bridging in PNG's notoriously harsh terrain has enabled Oilmin to create a workable – "Practical Bridging Standard". The standard is designed to ensure safe bridging access that is cost effective for the company and efficient for all relevant seismic departments.

Tree felling is kept to a minimum but is typically required for helipads, drop zones and camp sites.





# SURVEY

Specialist surveyors with extensive experience in the field. In addition, experienced compass men are also utilised to assist the surveyors, all of whom are proficient in using hand-held GPS units.



# DRILLING AND PRE-LOADING

Initially, Oilmin's primary function was to supply manpower for seismic services. Through partnerships with various specialised seismic providers, we were able to cultivate a talented pool of skilled and experienced drilling personnel. Over time, Oilmin expanded its capabilities and acquired man-portable drilling equipment, enabling us to provide comprehensive drilling services. Additionally, we have a team of seasoned shot loaders who are fully trained and certified to meet the standards set by both Australia and PNG.



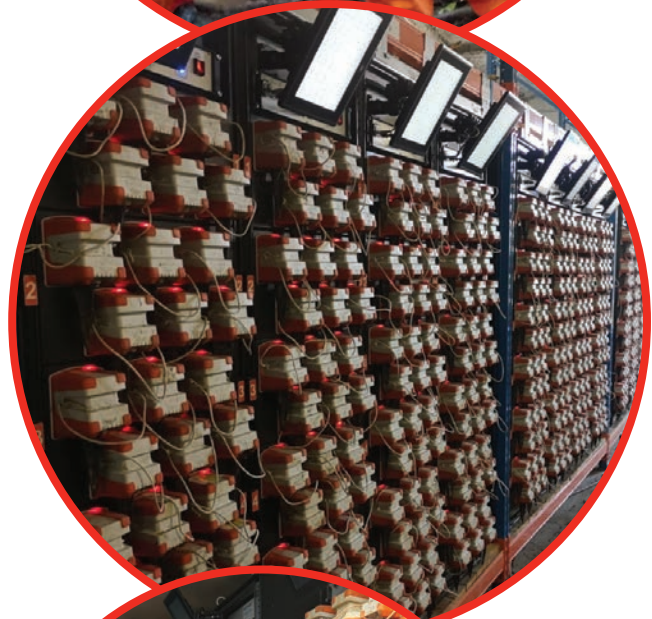
# RECORDING

Seismic recording in Papua New Guinea (PNG) typically involves the use of seismic surveying equipment to measure and analyze the properties of the earth's subsurface.

To record seismic data in PNG, the equipment is typically deployed in an array across the area of interest, and it is coupled with the ground to ensure optimal sensitivity. The system uses an array of geophones, which are devices that convert ground motion into electrical signals, to detect seismic waves generated by a seismic source, such as a small explosive charge or a vibrating plate.

Once the data is collected, it is processed to create detailed images of the subsurface, which can be used to locate potential oil and gas reserves, as well as to help identify geological structures, such as faults and folds, that may impact the stability of the ground.

The provider of recording equipment is responsible for providing the Observers, while OILMIN supplies the required crews for equipment deployment and retrieval, as well as data acquisition.





# TRAINING

OM Holdings Limited places a strong emphasis on maintaining high standards in its Training and Development Program. We achieve this by employing Certified Trainers, partnering with reputable Training Institutions, and offering World-Class Training Opportunities that enable our staff to gain the necessary skills and knowledge to excel in their respective fields. Our commitment to ensuring our employees are competent and up-to-date with the latest industry practices is demonstrated through opportunities for international training.

OM Holdings Limited places great importance on maintaining high standards in its Training and Development Programme. To achieve this, they employ certified trainers, partner with reputable training institutions and offer world-class training opportunities for their staff to gain the necessary skills and knowledge to excel in their respective fields. This commitment is demonstrated through opportunities for international training that ensure their employees are competent and up-to-date with the latest industry practices.

Oilmin have a network of Registered Training Organisations located in Port Moresby, which offer a range of training programs and courses for both Oilmin employees and external clients. These programs cover a variety of topics, including health, safety, and environment (HSE), technical skills, leadership, and management, and can be found in the training schedule for more information of courses on offer.

Oilmin also provides onboarding training for new employees, which includes an introduction to the company's policies and procedures, safety rules, and job-specific training. The onboarding process covers all Job Hazard Analyses (JHA's) and Standard Operating Procedures (SOP's) that are specific to each employee's job description. Experienced employees can also receive on-the-job training to develop new skills or update their existing ones.

In addition to formal training, Oilmin encourages their employees to participate in informal learning opportunities, such as attending conferences, workshops, and seminars, or engaging in on-the-job learning and coaching from colleagues and supervisors. They also have a strong commitment to promoting from within the company, allowing employees to develop their careers within the company and gain new skills and experiences.

Overall, Oilmin's approach to training and development of its personnel in Papua New Guinea is comprehensive, with a focus on providing a range of training opportunities to support employee growth and development, ensuring that the company's workforce is equipped to meet the needs of their clients.



# CAMP MANAGEMENT AND CATERING

Oilmin is a leading provider of comprehensive camp management and catering services in Papua New Guinea (PNG). We specialise in delivering top-quality solutions to meet the unique needs of our clients operating in remote and challenging environments.

With decades of experience in the industry, Oilmin has a proven track record of providing expert camp management and catering services to some of the largest oil and gas exploration and production companies in PNG. We understand the importance of providing safe, comfortable, and hygienic living quarters for personnel working in isolated areas.

Our skilled and experienced team is dedicated to delivering customised solutions tailored to each client's specific requirements. We provide full-service catering solutions, including menu planning, meal preparation, and delivery.

Whether it's a small exploration camp or a large-scale production facility, we have the expertise and resources to provide the necessary camp management and catering services to ensure a safe, comfortable, and productive working environment.

We pride ourselves on our commitment to providing the highest quality services and exceeding our clients' expectations.

Our commitment to quality is demonstrated by our Hazard Analysis and Critical Control Points (HACCP) & ISO certification, which ensures that all our catering services meet the highest standards of food safety and hygiene. Our experienced catering team is trained to handle all aspects of food preparation and service, from menu planning and procurement of ingredients to cooking, serving, and cleaning.

At Oilmin, we believe that a well-managed camp and high-quality catering services are essential to maintaining the well-being and morale of your workforce. We understand the unique challenges of working in remote locations, and we work closely with our clients to create a comfortable and safe environment for their employees.

With our proven track record in Camp Management and Catering services and our HACCP & ISO certification, you can trust Oilmin to deliver exceptional service that meets the highest standards of quality and safety.





# OUR PEOPLE

At Oilmin, we take pride in our team of professional and dedicated camp and catering personnel. Our team is composed of individuals who are committed to delivering high-quality services to our clients, while ensuring the safety and well-being of all personnel working on our sites.

Our safety officers are trained and certified to ensure that all activities are carried out in accordance with established safety protocols. They work closely with other team members to identify and mitigate potential hazards, and to implement measures to prevent accidents and injuries.

Our camp managers are responsible for the day-to-day management of our camps, including the coordination of personnel, logistics, and resources. They work closely with our clients to ensure that all camp activities are aligned with their specific requirements, and that our camps provide a comfortable and safe living environment for all personnel.

Our catering managers oversee all catering operations, from menu planning and ingredient procurement to meal preparation and delivery. They work closely with our qualified chefs and cooks to ensure that all meals are prepared to the highest standards of quality and hygiene.

Our qualified quality auditors ensure that all food and catering services meet the highest standards of quality and safety, and that all equipment and facilities are well-maintained and in good working condition.

We also have dedicated teams of warehouse, janitorial, and maintenance personnel who work tirelessly to ensure that all equipment and facilities are properly maintained, and that all personnel have access to essential resources and services.

At Oilmin, we believe that our people are our greatest asset, and we are committed to providing them with the training, support, and resources they need to deliver exceptional service to our clients.





# CIVIL CONSTRUCTION

Oilmin has an extensive fleet of well-maintained and low-hour equipment that is ideal for remote construction projects, such as rig pad construction. Our team of experienced insertion crews are mobilized to remote locations to clear areas for the construction of helipads, enabling us to bring in our construction equipment.

Due to the limitations on the lifting capacity of helicopters, our dozers and excavators are disassembled for transportation and then reassembled on location. This process is facilitated by mobilizing a gantry to site to assist with the reassembly. Our crew of experienced mechanics and operators, along with our heli-portable workshops, work tirelessly to achieve this task.

Oilmin is renowned for being the remote site experts, and we have constructed 20+ rig pads for international oil companies. This is a testament to our expertise in managing the challenges associated with remote construction projects, and our commitment to delivering high-quality services to our clients.



## “WORK SAFE, HOME SAFE”

Oilmin’s top priority is to ensure a safe working environment for our employees. We operate in challenging conditions that require a high degree of care, expertise, and planning. As a company, we are committed to promoting safety and preventing accidents.

In addition, we recognize the importance of the physical and social environment in which we operate in Papua New Guinea. We are committed to minimizing any disruption to the environment during our clients’ field operations and building positive relationships with the communities we work alongside.

Our safety-first approach is embedded in our “Work Safe, Home Safe” philosophy, which emphasizes the importance of safety at work and in our employees’ personal lives. We strive to maintain a safe and healthy work environment and to ensure that our employees return home safely at the end of each workday.





# BIOKUBE

Oilmin exclusively represents and serves as the agent for Biokube STP in Papua New Guinea. Biokube provides containerised wastewater treatment plants that can be easily installed and moved, making it an ideal solution for remote areas. These wastewater treatment systems adhere to national regulations and international standards, ensuring that wastewater is treated to the highest degree.

Our Oilmin staff are trained and certified to maintain the Biokube STPs, ensuring the ongoing effectiveness of these systems.



## Ezy House

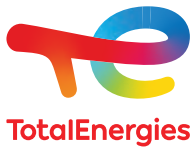
OILMIN is the exclusive distributor and agent for the Ezy House Flat Packs in Papua New Guinea.

Ezy House offers a cost effective, modular, flat pack solution for camps throughout Papua New Guinea. These units are plug & play installation and comply to International Standards. They are shipped in 20" ISO container sized bundles—certified for international shipping.





# Some clients and partners OILMIN have worked with over the past 30 years in Papua New Guinea







**OILMIN**

**OM HOLDINGS LTD**

PO Box 8073 Boroko, 111 NCD,  
Papua New Guinea

**Physical Address**

Lot 30, Sec 32 Ogoa Street  
Port Moresby  
Papua New Guinea

**Telephone**

Port Moresby Office +675 3213153  
Mount Hagen Office +675 5421221

**[www.oilmin.com](http://www.oilmin.com)**